

MONTHLY MEMBERSHIP PROGRESS REPORT

District 321B2

Results as of: 5/31/2026

GMT:

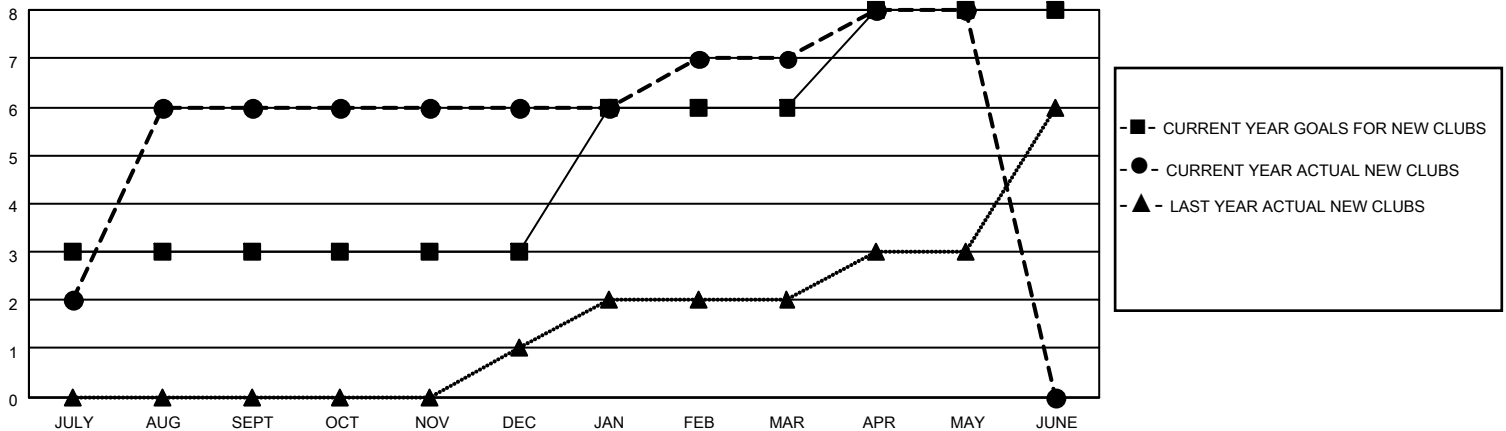
LOCATION INDIA

GMT CA

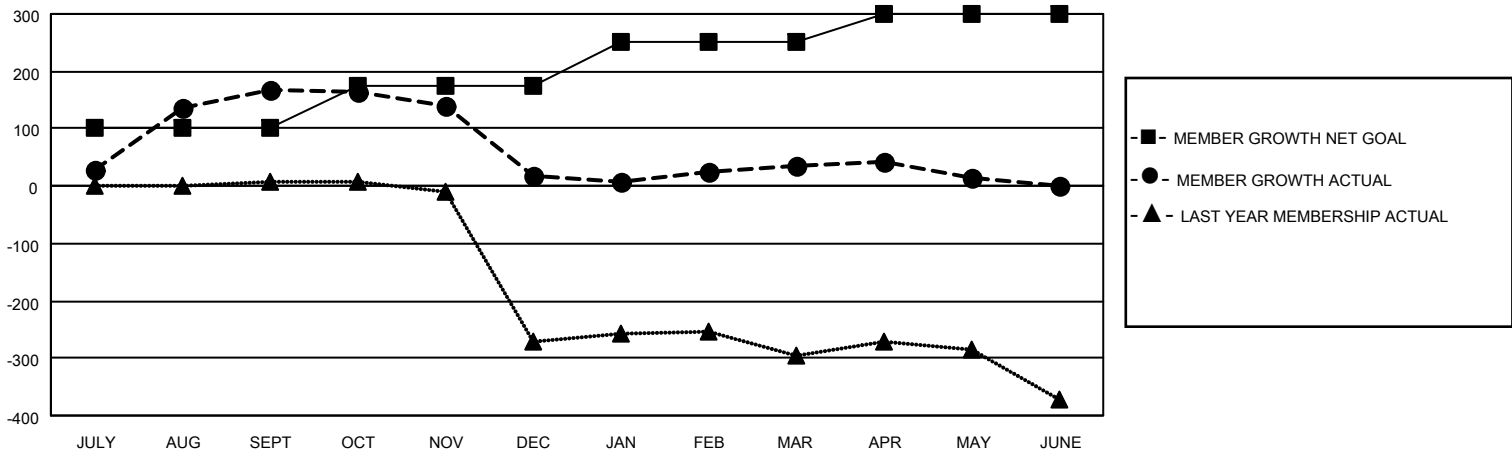
Clubs			
RESULTS FOR 2025-2026			
QUARTER	NEW CLUB GOAL	NEW CLUBS	DROPPED CLUBS
JULY/AUG/SEPT	3	6	0
OCT/NOV/DEC	0	0	4
JAN/FEB/MAR	3	1	0
APR/MAY/JUNE	2	1	0

Members			
RESULTS FOR 2025-2026			
QUARTER	MEMBER GROWTH NET GOAL	MEMBER GROWTH ACTUAL	DROPPED MEMBERS ACTUAL (including transfers)
JULY/AUG/SEPT	100	253	50
OCT/NOV/DEC	75	61	202
JAN/FEB/MAR	75	38	19
APR/MAY/JUNE	50	48	47

GOALS AND ACTUAL NEW CLUBS CUMULATIVE



GOALS AND ACTUAL MEMBERS CUMULATIVE



DROPPED CLUBS: 4	47 CLUBS OF 73 ADDED 1 OR MORE NEW MEMBERS	GENDER DISTRIBUTION MALE 1,024 (66.84%) FEMALE 508 (33.16%)
DROPPED MEMBERS DECEASED 5 CLUB CANCELLED 64 OTHER 247 TOTAL 316	CLICK HERE FOR CUMULATIVE MEMBERSHIP DATA	TOTAL FAMILY UNIT MEMBERS 470 FAMILY MEMBERS PAYING HALF DUES 262